

Customer :
Project Name :
Project No. :
Revision No. :

SPECIFICATION for INDUCTION MOTOR



0		For Bidding			
No.	DATE	DESCRIPTION	PREPARED BY	CHECKED BY	APPROVED BY

AC INDUCTION MOTOR DATA SHEET

Model No.or RFQ No.		Item No.		Rev. No. []			
Project Name		Project No.		Quantity sets			
GENERAL SPECIFICATION			PERFORMANCE DATA				
Frame Size	90L		Rated Output	0.75 kW 1.0 HP			
Type	HLP-0.75/6		Number of Poles	6			
Enclosure(Protection)	Totally Enclosed / IP55		Rotor Type	Squirrel Cage			
Method of Cooling	IC411(FC)		Starting Method*	<input checked="" type="checkbox"/> D.O.L <input type="checkbox"/> Y-Δ			
Rated Frequency	60 Hz		Rated Voltage	380 V			
Number of Phases	3		Current	Full Load	2.0 A		
Insulation Class	<input checked="" type="checkbox"/> F <input type="checkbox"/> B <input type="checkbox"/> H		Locked-rotor**	510 %			
Temp. Rise at full load (by resistance method)	at 1.0 S.F 80 deg. C		Efficiency				
Motor Location	<input checked="" type="checkbox"/> Indoor <input type="checkbox"/> Outdoor						
Altitude	Less than 1000 meter		100% Load	82.5 %			
Relative Humidity	Less than 80 %		Power Factor(p.u)				
Ambient Temp.	40 deg. C (Max.)						
Duty Type	Continuous (S1)		100% Load	0.694			
Service Factor	1.15		Speed at Full Load	1140 r.p.m			
Mounting	B3		Torque				
Bearing	Type	Anti-Friction	Full Load	0.6 kg·m 6.3			
	DE/N-DE	6205ZZC3 / 6204ZZC3	Locked-rotor**	200 % 1.3 kg·m			
	Lubricant	Grease	Breakdown**	265 % 1.7 kg·m			
External Thrust	Not applicable		Moment of Inertia (J)				
Coupling Method	<input checked="" type="checkbox"/> Direct <input type="checkbox"/> V-Belt		Load(Max.)	1.602 kg·m ²			
Shaft Extension	<input checked="" type="checkbox"/> Single <input type="checkbox"/> Double		Motor	0.003 kg·m ²			
Terminal	Main	<input checked="" type="checkbox"/> Aluminum <input type="checkbox"/> Cast Iron	Sound Pressure Level (No-load & mean value at 1m from motor)	69 dB(A)			
Box	Aux.	<input type="checkbox"/> Yes <input type="checkbox"/> No	Vibration	1.6 mm/sec (peak)			
	Location	Refer to Outline Drawing	Permissible number of consecutive starts	Cold 20 times Hot 15 times			
Application			Paint	Munsell No.	PHANTONE 279C		
Area classification	Non-Hazardous						
Type of Ex-Protection	Not applicable						
Applicable Standard	KS, IEC, NEMA MG1 Part30(Vpeak)						
ACCESSORIES			SUBMITTAL DRAWING				
			Outline Dimension Drawing \ Motor Weight(Approx.)				
			B3 LM-T1095B3PLV01 30 kg				
			REMARK				
			*. Premium efficiency(IE3) acc. to KS C 4202				
			*. SSEN Series				
			*. For use on PWM VFD 10:1VT,3:1CT@1.0S.F&F Temp.rise				
SPARE PARTS			<div style="border: 2px solid red; padding: 10px; text-align: center; font-size: 2em; color: red;">FOR BIDDING</div>				
			Date	DSND	CHKD	CHKD	APPD
			2021-04-22				

Type : HLP-0.75/6

Full Load Torque : 0.6 kg.m

Load moment of Inertia (J) : - kg.m²

Motor moment of Inertia (J) : 0.003 kg.m²

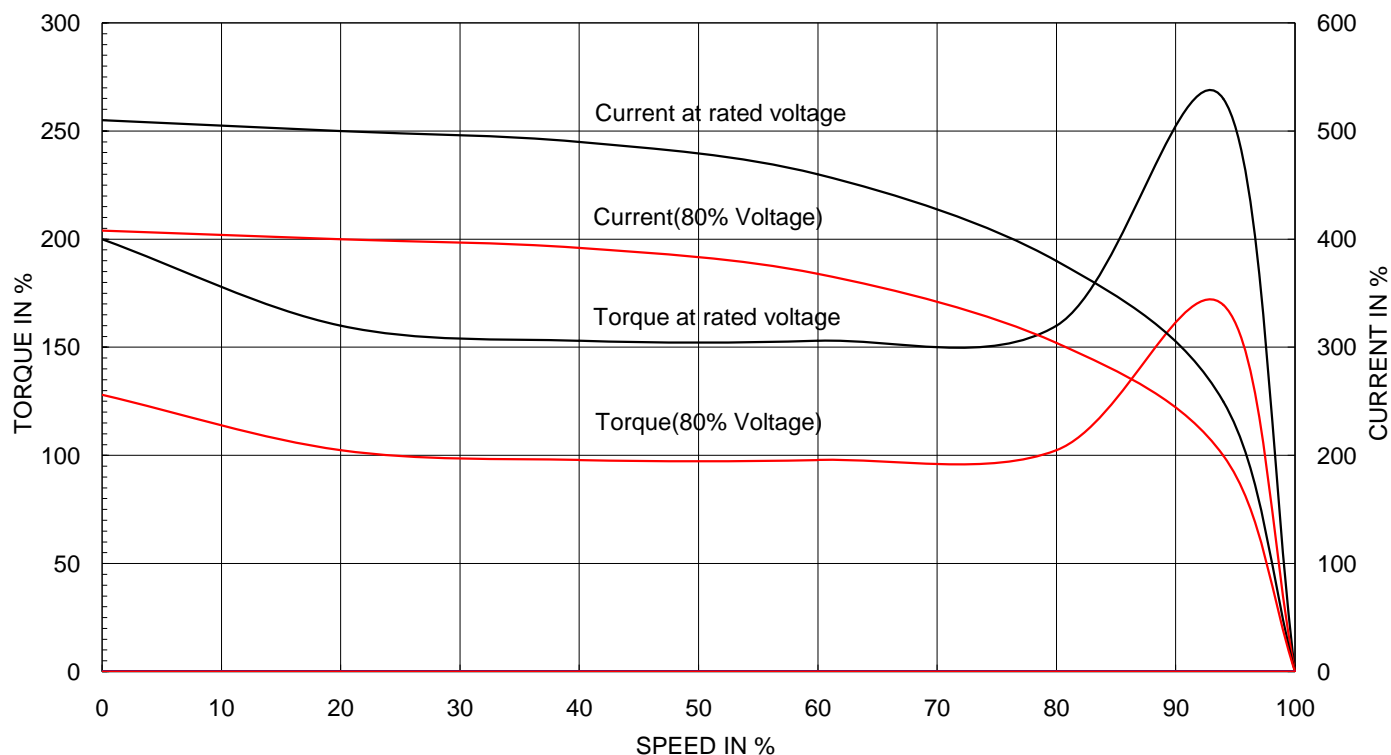
0.75 kW 6 P 60 Hz

Speed at Full Load : 1140 RPM

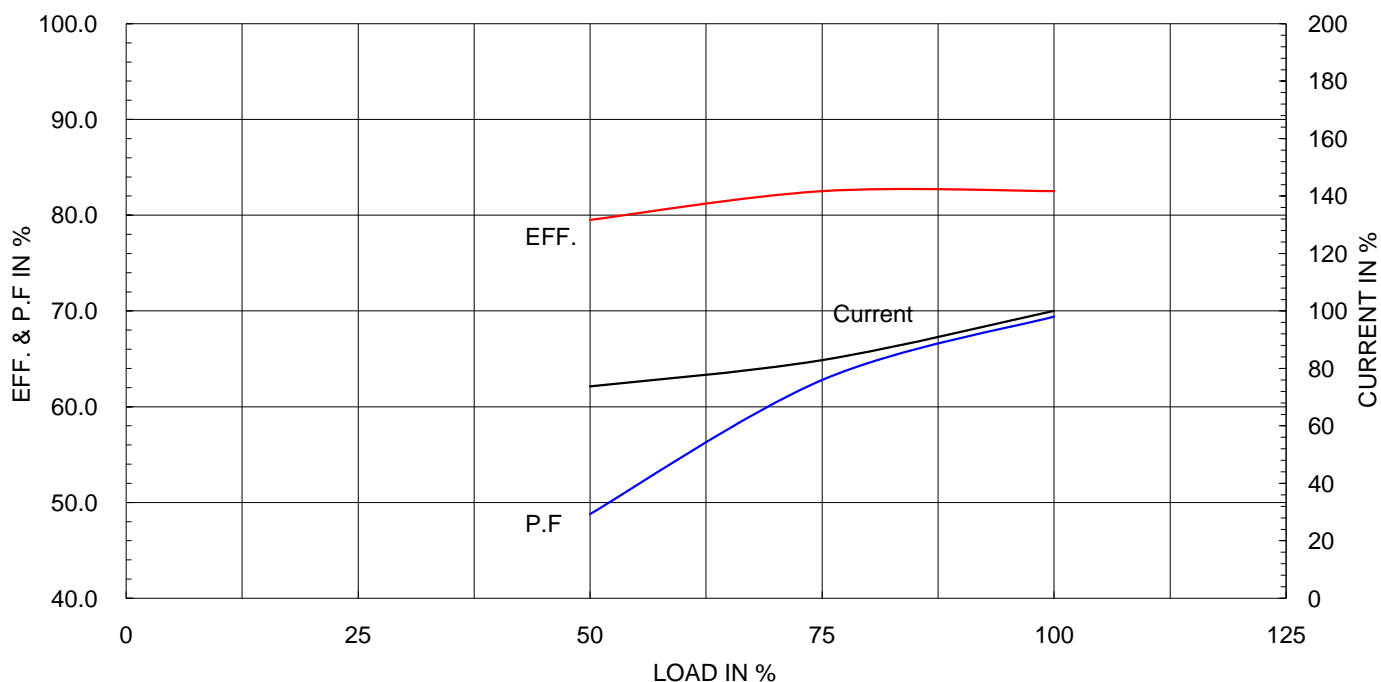
Rated Voltage 380

Full Load Current 2.0A

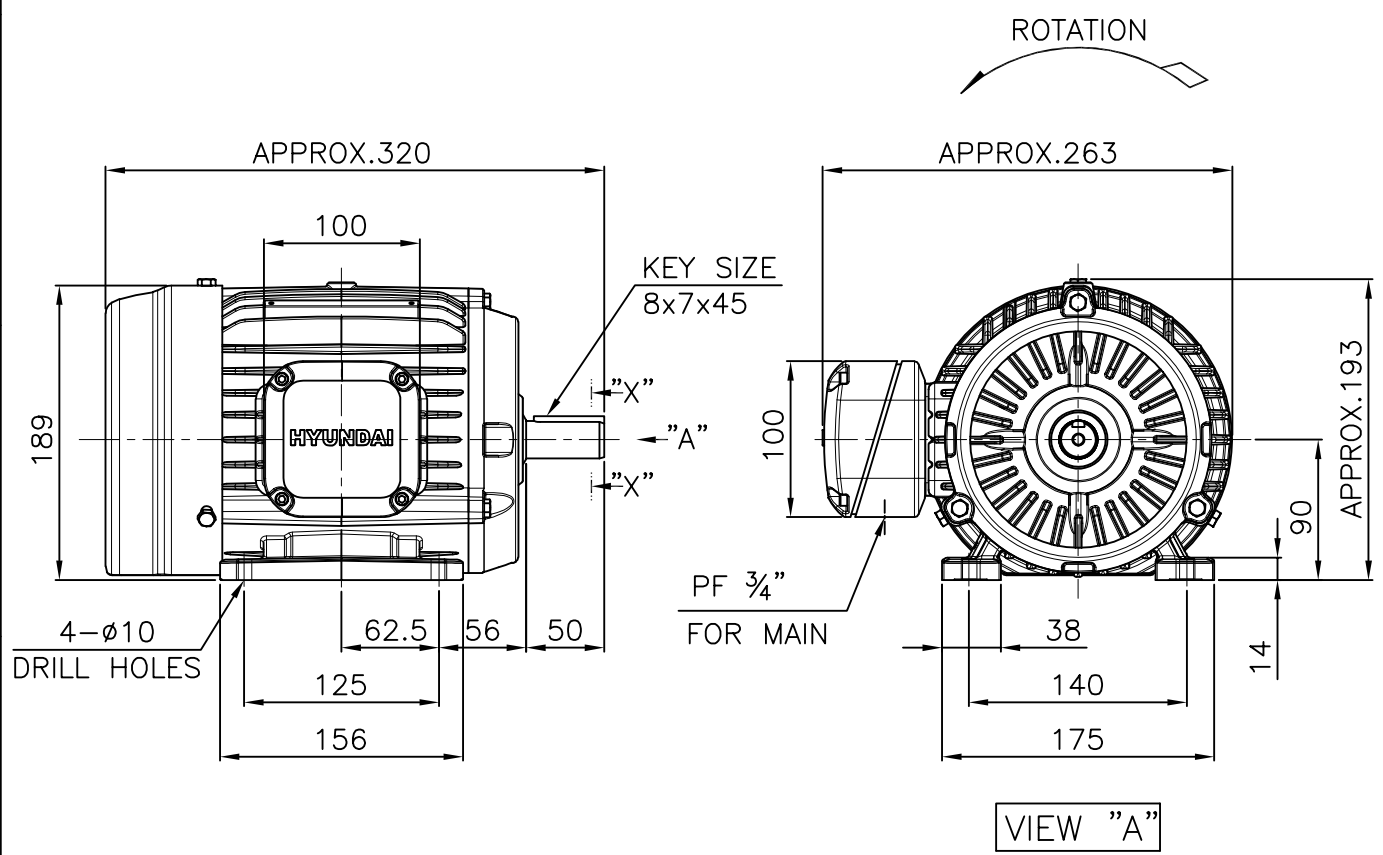
SPEED VS TORQUE & CURRENT CURVE



OUTPUT VS EFF., P.F & CURRENT CURVE



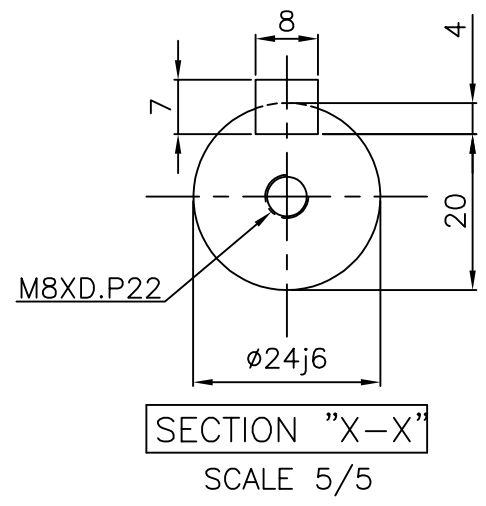
1			2		3		4		
▽	50S	REV	DATE	CONTENTS		REVD BY	CHKD BY	CHKD BY	APPD BY
▽▽	12.5S								
▽▽▽	3.2S								
▽▽▽▽	0.4S								



NOTE

1.TOLERANCE :

CENTER HEIGHT	90	$\begin{smallmatrix} 0 \\ -0.5 \end{smallmatrix}$
BASE HOLES	ø10	$\begin{smallmatrix} +0.36 \\ 0 \end{smallmatrix}$
SHAFT DIAMETER	ø24	$\begin{smallmatrix} +0.009 \\ -0.004 \end{smallmatrix}$
KEYWAY WIDTH	8	$\begin{smallmatrix} 0 \\ -0.036 \end{smallmatrix}$
KEYWAY DEPTH	4	$\begin{smallmatrix} +0.2 \\ 0 \end{smallmatrix}$
KEY WIDTH	8	$\begin{smallmatrix} 0 \\ -0.036 \end{smallmatrix}$
KEY HEIGHT	7	$\begin{smallmatrix} 0 \\ -0.090 \end{smallmatrix}$

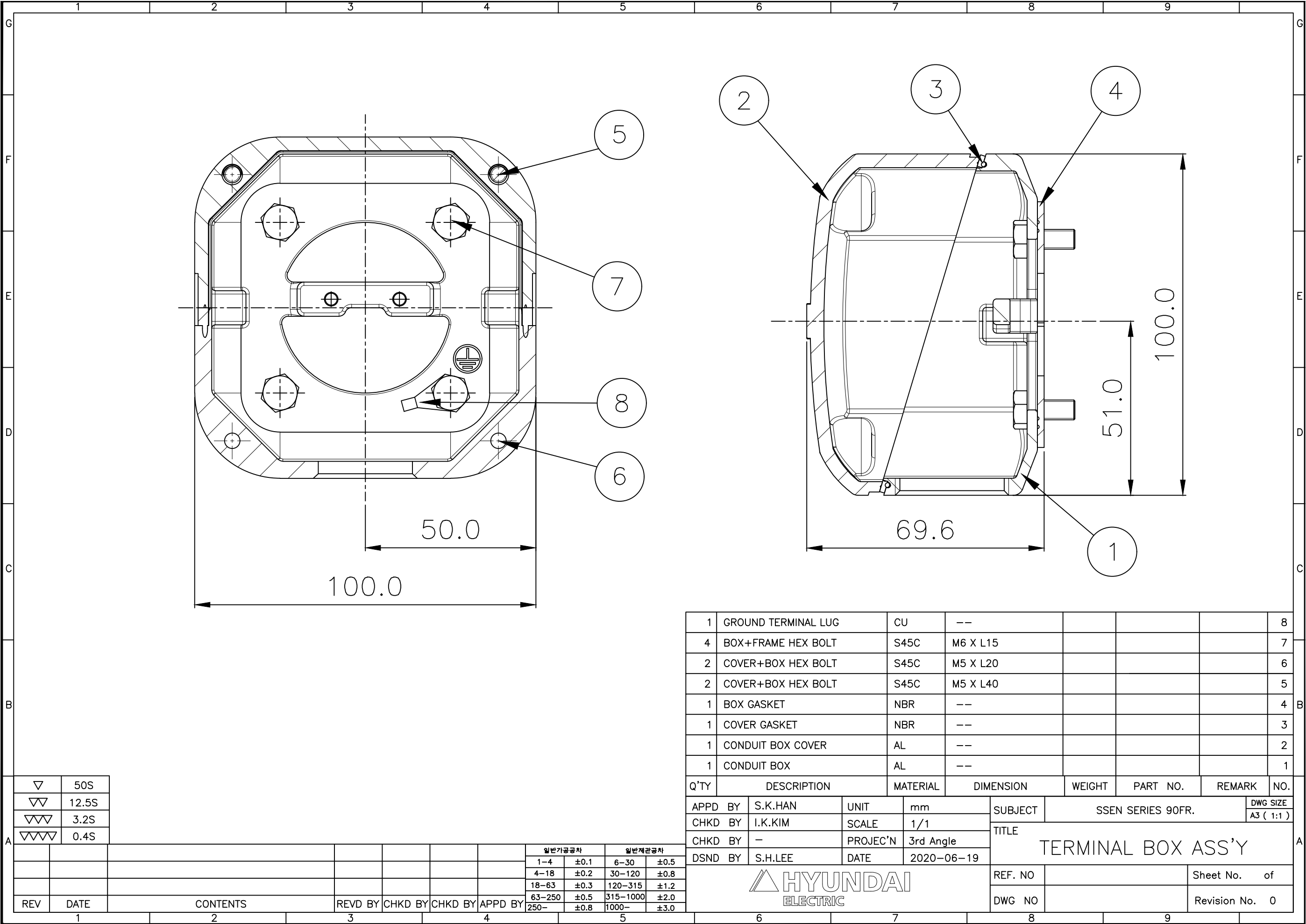


APPD BY	S.K.HAN	UNIT	mm	SUBJECT	KS, IEC Fr.90L	DWG SIZE	A4 (16)
CHKD BY	S.Y.KIM	SCALE	1/6	TITLE OUTLINE			
CHKD BY	I.K.KIM	PROJEC'N	3각법 (3rd Angle)				
DSND BY	S.H.LEE	DATE	2019.06.18				
				REF. NO	Sheet No. of		
				DWG NO	LM-T1095B3PLV01	Revision No.	0

THIS DRAWING IS PROPRIETARY TO HYUNDAI ELECTRIC. NO PART OF THIS DRAWING
MAYBE REPRODUCED WITHOUT THE PERMISSION OF HYUNDAI ELECTRIC.


본 도면은 현대일렉트릭(주) 재산이므로
허가없이 복사할 수 없음 (취급유의)

HYUNDAI
ELECTRIC



▽	50S
▽▽	12.5S
▽▽▽	3.2S
▽▽▽▽	0.4S

REV	DATE	CONTENTS	REVD BY	CHKD BY	CHKD BY	APPD BY	일반기공차	일반제관공차
							1-4 ±0.1 6-30 ±0.5	
							4-18 ±0.2 30-120 ±0.8	
							18-63 ±0.3 120-315 ±1.2	
							63-250 ±0.5 315-1000 ±2.0	
							250- ±0.8 1000- ±3.0	

1	GROUND TERMINAL LUG		CU	--				8
4	BOX+FRAME HEX BOLT		S45C	M6 X L15				7
2	COVER+BOX HEX BOLT		S45C	M5 X L20				6
2	COVER+BOX HEX BOLT		S45C	M5 X L40				5
1	BOX GASKET		NBR	--				4
1	COVER GASKET		NBR	--				3
1	CONDUIT BOX COVER		AL	--				2
1	CONDUIT BOX		AL	--				1
Q'TY	DESCRIPTION		MATERIAL	DIMENSION	WEIGHT	PART NO.	REMARK	NO.
APPD BY	S.K.HAN	UNIT	mm	SUBJECT	SSEN SERIES 90FR.			DWG SIZE
CHKD BY	I.K.KIM	SCALE	1/1	TITLE				A3 (1:1)
CHKD BY	—	PROJEC'N	3rd Angle					
DSND BY	S.H.LEE	DATE	2020-06-19					
				REF. NO		Sheet No. of		
				DWG NO		Revision No. 0		
6		7		8		9		